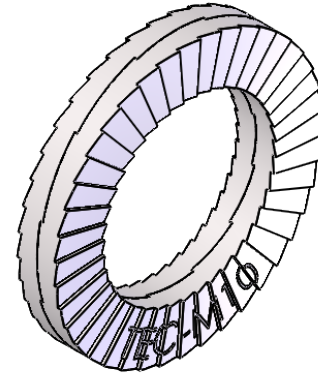
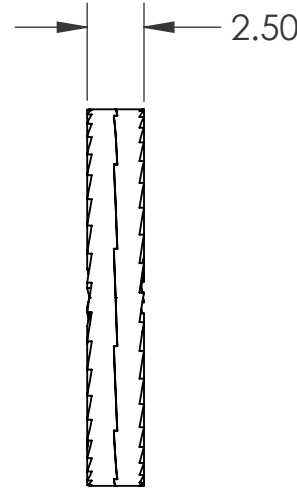
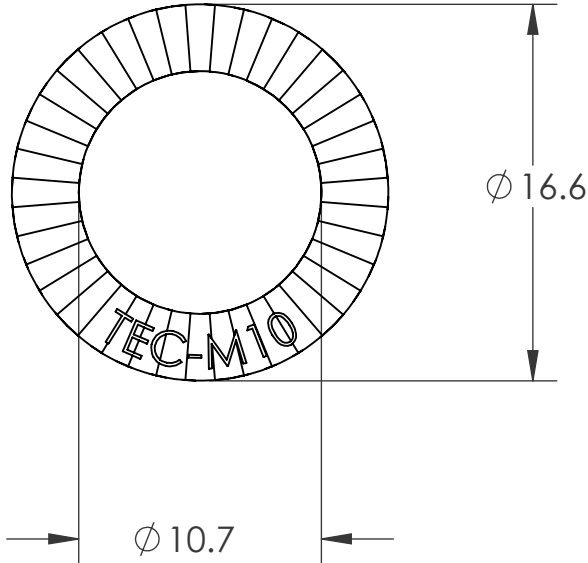



| REVISIONS | | | |
|-----------|-----------------------------|-----------|------|
| REV. | DESCRIPTION | DATE | ECN |
| A | INITIAL RELEASE | 2/27/17 | 2555 |
| B | HEAT TREAT WAS 480 - 540 HV | 3/29/17 | 2615 |
| C | MATERIAL UPDATE | 7/12/2018 | 3056 |



PROPRIETARY AND CONFIDENTIAL
 THIS DRAWING, AND THE INFORMATION CONTAINED HEREIN, ARE THE PROPERTY OF SHEREX AND ARE NOT TO BE USED IN ANY MANNER DETRIMENT TO THE INTEREST OF THE COMPANY.
 SHEREX FASTENING SOLUTIONS RESERVES THE RIGHT TO REVISE PART/DRAWING WITHOUT NOTICE.

DRAWING NO.:
TEC-M10

| | | | |
|--|--|-------------|--|
| UNLESS OTHERWISE SPECIFIED: | NAME | DATE |  TECSERIES <small>A SHEREX FASTENING SOLUTIONS® PRODUCT</small> |
| DIMENSIONS ARE IN MILLIMETERS TOLERANCES: ANGULAR: MACH ±1 BEND ±1 I.D. TOLERANCE: ±0.2 O.D. TOLERANCE: ±0.2 THICKNESS TOLERANCE: ±0.25 | DRAWN | MTB 2/27/17 | |
| INTERPRET GEOMETRIC TOLERANCING PER: ASME Y14.5M-1994 | CHECKED | | DESCRIPTION: TEC WASHER GLUED PAIR 10MM |
| MATERIAL SCM435 OR 4130 STEEL, HT: THROUGH HARDEN 465 HV MIN | ENG APPR. | JVK 2/27/17 | |
| FINISH DELTA PROTEKT BASE COAT (KL100) & TOP COAT (VH302GZ) | MFG APPR. | | SIZE PART NO.: A TEC-M10 |
| DO NOT SCALE DRAWING | Q.A. | | |
| | COMMENTS: E-mail: info@disc-lock.com www.disc-lock.com Phone: 866-474-3739 Fax: 716-875-0358 | | REV C |
| | SCALE: 3:1 WEIGHT: | | SHEET 1 OF 1 |